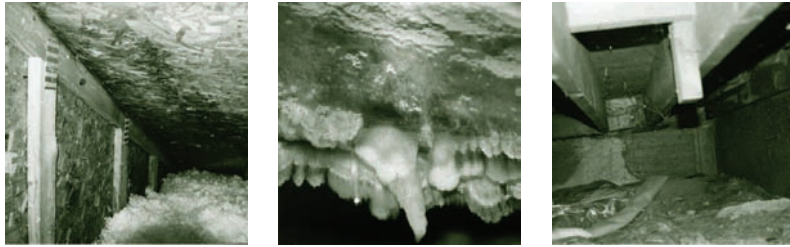


Mold and Moisture

Packer Engineering, Inc. provides a full range of consulting services related to residential, commercial, and industrial applications. Our Construction Technology and Industrial Hygiene Groups are experts at the investigation, evaluation, and control of moisture and mold related issues.

Packer Engineering combats mold and moisture problems by performing cause and origin investigations, building repair, mold assessment investigations, mold remediation, and indoor air quality training.

Count on Packer Engineering to provide total solutions to the most difficult problems, anywhere in the world, 24 hours-a-day, 7 days-a-week.



Mold growth and wood decay under barrier EIFS due to water infiltration

Services

- Cause and origin investigations of water and moisture sources that create mold problems
- Assessments of mold contamination and the extent of hidden mold
- Identification of water damaged material
- Checking air ducts and air handling systems for mold contamination
- Sampling (surface, bulk, air, carpet) of interior walls, attics, basements, and building exteriors
- Advising on mold control and remediation guidelines
- Preparation of remediation work scopes for mold abatement
- Preparation of building repair specifications for correction of moisture problems
- Provide training

Mold and Moisture

Indoor air quality is a complex issue. It involves constantly changing interactions of many environmental factors including moisture promoted microbial (mold) growth.

Mold has become an even greater problem during recent years as the construction industry strives to create “tighter” buildings for the sake of energy efficiency. Unless these new practices are executed properly, moisture incursion can occur with a reduced potential for drying. Unfortunately, mold infestation costs building owners plus the construction and insurance industries billions of dollars.

Cause and Origin Investigations

- Leakage investigations of facades, roofs, windows, and foundations
- Mold cause and origin investigations
- Building envelope investigations including HVAC systems, insulation, and condensation and moisture analysis
- Water vapor transmission analysis
- Identification of design, workmanship, materials, products, and maintenance deficiencies responsible for mold problems
- Development of repair documents, specifications, and drawings to repair deficient construction responsible for moisture problems, and provide construction administration

Remediation and Control

- Sampling to assess the presence and type of mold
- Adapt or modify remediation guidelines to fit the situation using professional judgment
- Develop mold remediation design documents, specifications, and drawings to remediate mold
- Cost estimating
- Construction administration, field observation, and post-remediation sampling
- Develop maintenance and building operation plans to eliminate future problems
- Select personal protection equipment to protect remediators

Training

- Health and Safety Procedures
- Personal Protective Equipment

